

10 January, 2025

WELCOME BACK TO SCHOOL

WELCOME BACK TO THE SPRING TERM!

Happy New Year! We hope you all had a restful and enjoyable holiday season. As we step into 2025, we are excited to welcome everyone back for a new term filled with opportunities to learn, grow, and succeed together.

Best Wishes,

Dan Clayden
Headteacher

MORNING ARRIVAL

- School starts at 8:40am.
- Please ensure your child has had breakfast before school.
- Late arrivals need to sign in at the school office
- If absent please email or call the office by 9am.

SCHOOL DISMISSAL

- School finishes at 3:15pm Nursery 3pm.
- Please let the office know if your child is being collected by someone different.
- Appointments should be arranged outside of school hours. Please let the office know if not.

DAILY THINGS TO REMEMBER

- Water Bottle
- Coat
- Reding book and diary

FRIENDLY REMINDER

PE Days

- YR Rainbowfish - Monday
- Y1 Seahorses - Tuesday
- Y2 Jellyfish - Thursday
- Y3 Narwhals - Monday
- Y4 Swordfish - Wednesday
- Y5 Manta rays - Thursday
- Y6 Dolphins - Friday



CLASSROOM

News

Year 1

This week, Seahorse Class began their new writing focus on the book *Wombat Goes Walkabout*. We have been practising using the conjunction "**and**" and exploring adjectives to describe the different animals in the story.

In PE, we have been **champion gymnasts**, exploring **wide, tall, and curled movements** while focusing on using **pointed toes and hands** and concentrating on holding our shapes with control. As Geographers, we have been learning about **human and physical features** in the environment. We explored our school grounds and discussed the different features we could see, identifying which were **natural** and which were **man-made**.



Year 6

This week, Year 6 have been learning all about circulation, starting with the heart. They recorded their own interpretations of what it looks like and added facts that they had discovered.

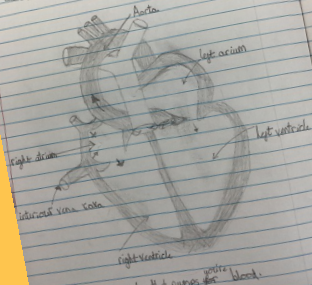
In writing, we tasted the sweetest items that we could imagine to help us write about the Witch's cottage in *Hansel and Gretel*. The children have been developing their knowledge of direct speech in their story too.

In Art and Design, we will be studying a range of artists and comparing their styles and inspirations. We are hoping to visit the Tate Gallery later in the year!

After the winter's break, the children have returned full of enthusiasm and vigour, ready for a busy term ahead.

Knowledge Organiser
The heart and the blood vessels (arteries, veins and capillaries) form the circulatory system.
The heart pumps blood around the body.

I don't think this video was a good example because some of the parts weren't true and most things were represented quite strangely. She had put the wrong amount of blood vessels / chambers.

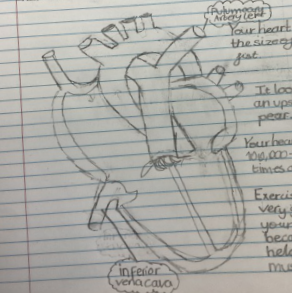


The heart is a muscle that pumps the blood.

Order: 8.1.26
All children, we are learning that the heart and blood vessels pump blood around our bodies.

Knowledge Organiser
The heart and the blood vessels (arteries, veins and capillaries) form the circulatory system.
The heart pumps blood around the body.

I don't think this video was a good example because some of the parts weren't true and most things were represented quite strangely. She had put the wrong amount of blood vessels / chambers.



Your heart is the size of your fist.
It looks like an upside-down pear.
Your heart beats 100,000-115,000 times a day.
Exercising is very good for your heart because it helps loose muscle.



Attendance

Class	Attendance this week
Rainbowfish — YR	99.2
Seahorses — Y1	96.2
Jellyfish — Y2	100
Narwhals — Y3	94.2
Swordfish — Y4	100
Manta Rays — Y5	96.9
Dolphins — Y6	96.4
WHOLE SCHOOL	97.45

Well done to the
**Jellyfish &
Swordfish
Class**
for the best
attendance this
week!

Team Points

Running totals

Penrose: 1

Gibson: 4

Methleigh: 3

Cookworthy: 2

Our winners this Term are the
Gibson TEAM!

Well done!



ACCELERATED READER CHAMPIONS!

Jellyfish	Narwhals	Swordfish	Manta Rays	Dolphins
Class Weekly Word Count				
39,677	29,597	416,596	330,987	181,355
Highest Pupil Weekly Word Count				
Charlie	Ben	Lowen	Merryn	Eli
100% achievers – Who has achieved their target?				

Maths Whizz

Below is our weekly progression for each class!

Seahorse: 0%

Jellyfish: 29%

Narwhals: 30%

Swordfish: 100%

Manta Rays: 82%

Dolphins: 88%

Well done to Swordfish class for winning the Maths Whizz trophy this week!

$$y = mx + b$$

$$V =$$

$$ax$$

$$\sqrt{b^2 - 4ac}$$

$$2a$$

$$\frac{-b \pm \sqrt{b^2 - 4ac}}{2a}$$

$$ax^2 + bx + c = 0$$



$$\frac{4}{3} \pi r^3$$

$$y$$

$$x =$$

School Messages

National Childs Measurement Program Reception & Year 6

The school nursing team will be in school On Monday 13th January to see Reception and Year 6 to take their measurements.

Please find information below for each year group including how to opt out.

Reception: <https://www.healthycornwall.org.uk/make-a-change/2024-child-health-programme-reception-year/>

Year 6: <https://www.healthycornwall.org.uk/make-a-change/2024-child-health-programme-year-6/>

Reception Vision Screening

On Wednesday 29th January Reception children have their vision screening if you would like to opt out, please follow the link below.

<https://www.healthycornwall.org.uk/make-a-change/2024-child-health-programme-reception-year/>

Donations

Reception and Nursery are looking for donations of clothing i.e. pants, socks, school trousers, skirts, tights, leggings and t-shirts. If your child has come home in any of reception or nursery clothing please can these be returned each time.

Music Lessons

If you would like to sign your child up to music lessons at school please click the link below to sign up with The Cornwall Music Trust.

<https://cmst.co.uk/signup>

School Places

School place applications for Reception September 2025 .

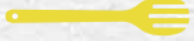
If you have not yet applied for your Nursery child to start school in September pleased do so by Wednesday 15th January after this date you will need to go through the second round later in the year.

Diary Dates

Date	Event
Monday 13th January	Reception & Yr6 National Measurement Program
Thursday 16th January	School Census menu Change
Wednesday 29th January	Reception Sight Tests
Monday 10th February	Autism Café with the Autism Team
Monday 17th - 21st February	Half Term
Monday 24th February	INSET DAY
Tuesday 25th - 28th Feb	Parents evenings– more info to follow
Monday 7th –21st April	Easter Holidays
Thursday 8th May	INSET DAY
Monday 26th - 30th May	Half Term
Friday 6th June	INSET DAY
Monday 7th July	INSET DAY
18th - 20th June	Year 3 Residential
2nd - 4th June	Year 4 Residential
9th - 11th June	Year 5 Residential
14th July - 18th July	Year 6 Residential
Wednesday 23rd July	Last day of School

WEEK 2

W/C: 11/11, 02/12, 13/01, 03/02, 24/02, 17/03



	MONDAY	TUESDAY	WEDNESDAY	THURSDAY	FRIDAY
HOT MAINS	Veggie Supreme Pizza 🌱 Served with Pesto Pasta	Beef Bolognese 🍖 Served with Wholewheat Pasta	Roast Chicken Served with Roast Potatoes and Gravy	Census Day Chicken & sweetcorn pizza	Crispy Chicken Burger Served with Chips
JACKET POTATO	Vegetable Fajita 🌱 Served with Wholegrain Rice	Chinese Vegetable Noodles 🌱	Winter Vegetable Hotpot 🌱 Served with Gravy	Cheese & Tomato pizza	Quorn Dippers 🌱 Served with Chips
JACKET POTATO	Jacket Potatoes 🍟 with a choice of hot and cold fillings	Jacket Potatoes 🍟 with a choice of hot and cold fillings	Jacket Potatoes 🍟 with a choice of hot and cold fillings	Jacket Potatoes 🍟 with a choice of hot and cold fillings	Jacket Potatoes 🍟 with a choice of hot and cold fillings
Tomato Pasta Fresh, homemade tomato sauce with penne pasta 🌱🍅					
All main meals are served with two vegetables					
DESSERT	Apple and Cinnamon Sponge with Custard 🌱	Crunchy Chocolate Mousse	Fruits of the Forest Jelly	Orange Glazed Sticky Sponge Pudding with Custard 🌱	Chocolate Cookie

AVAILABLE EVERY DAY

Water, salad, freshly baked bread, yoghurt & fresh fruit

🌱 Vegetarian 🐟 Oily Fish 🌾 Wholegrain 🍏 Fruity! 🍖 Nutritionist's Choice

Our menu is subject to change. Please be assured that all notified medical diets and allergy requirements will be safely catered for.

Next Week's Menu

Census Day Menu

GRAB YOURSELF A

PIZZA



THE ACTION

MAINS
pick a slice of your favourite
Cheese and Tomato
"Chicken and Sweetcorn"

SIDES
Potato Wedges
Cucumber and Tomato Salad

DESSERT
Vanilla or Chocolate Ice Cream
Menus may be subject to change

AUTISM CAFE

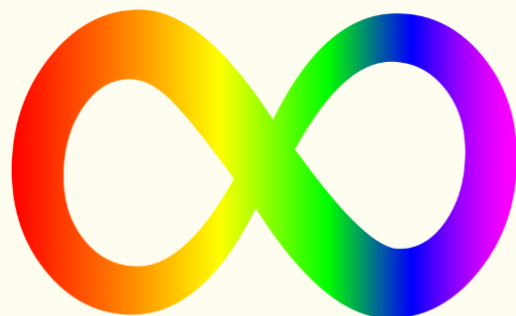
MONDAY 10TH FEB 2025

2-3PM AT PORTHLEVEN SCHOOL



*Everyone is welcome
children dont need to
be diagnosed or on the
pathway to discuss their
child*

*Speak with
Rebecca Thomas
From the Autism
Team*





Inspiring Women Network Community Consultation Events
Gather, Share, Transform
SHAPING OUR FUTURE TOGETHER

Saturday 18th January
10:00 AM - 1:00 PM

Thursday 23rd January
10:00 AM - 1:00 PM

Malpas Road
Community Centre,
Truro, TR1 1QR

***Join us for an interactive morning
of connection, collaboration and change***

- ✓ Start the year with impact!
- ✓ Share your experiences and ideas
- ✓ Connect with other amazing women in Cornwall
- ✓ Use your voice to shape new services & initiatives
- ✓ Enjoy a delicious meal and receive a thank-you gift!

REGISTER NOW



Spaces are limited, so book your place today at:
www.inspiringwomennetwork.co.uk/consultation
Got questions? Contact:
community@inspiringwomennetwork.co.uk



MENTAL HEALTH SUPPORT TEAM - MHST



Parents and Carers -
please join us at our
1hr online
Behaviour Workshop

Monday 27th January - 9.30am & 2pm
Tuesday 28th January - 11.30 am & 4pm
Wednesday 29th January - 9.30am & 1.30pm
Thursday 30th January - 11.00am & 4pm



This workshop provides parents with
practical strategies to foster positive
behaviour and communication at
home.

To book a place please complete
the online form **HERE**
<https://forms.office.com/e/1PwGDXSQ40> or scan the QR code



This workshop is open to parents/carers of
primary aged children enrolled in Reception
to Year 6 in any school in Cornwall

MENTAL HEALTH SUPPORT TEAM - MHST



Parents and Carers -
please join us at our
1hr online
Sleep Workshop

Monday 3rd February - 11am & 4pm
Tuesday 4th February - 9.30am & 2pm
Wednesday 5th February - 9.30am &
1.30pm
Thursday 6th February - 11am &
1.30pm

This workshop aims to provide
psychoeducation on sleep hygiene
and sleep routines. Also includes
practical strategies for helping
children

To book a place please complete
the online form [HERE](#)

<https://forms.office.com/e/7ac7qHLPhc> or scan the QR code



This workshop is open to parents/carers of
primary aged children enrolled in Reception
to Year 6 in any school in Cornwall

**STUDY
SMART**

Free Online Courses



ncfe. | cache



**Education & Skills
Funding Agency**

**Fully Funded
School
Support
Course**

**Available
in Levels
1, 2 & 3**

***Please go to our website
for more detailed
information.**



**6 Week
Course**

Mon - Fri

Daily sessions

1st session 9:30 - 11:30am

2nd session 12:30 - 2pm

www.studysmartuk.online



Online neurodiversity group

**2nd Thursday of the
month
1.30-2.30**

**14th Nov – Smiles Together
12th Dec – Masking
9th Jan – Food and Nutrition
13th Feb – Bladder and
Bowel team**

**For more information or to get the
online meeting link:
info@homestartkernow.org.uk**



Should I keep my child off school?



Yes

Until...

Chickenpox	at least 5 days from the onset of the rash and until all blisters have crusted over
Diarrhoea and Vomiting	48 hours after their last episode
Cold and Flu-like illness (including COVID-19)	they no longer have a high temperature and feel well enough to attend. Follow the national guidance if they've tested positive for COVID-19.
Impetigo	their sores have crusted and healed, or 48 hours after they started antibiotics
Measles	4 days after the rash first appeared
Mumps	5 days after the swelling started
Scabies	they've had their first treatment
Scarlet Fever	24 hours after they started taking antibiotics
Whooping Cough	48 hours after they started taking antibiotics

No

but make sure you let their school or nursery know about...

Hand, foot and mouth	Glandular fever
Head lice	Tonsillitis
Threadworms	Slapped cheek



SCAN ME

Advice and guidance

To find out more, search for health protection in schools or scan the QR code or visit <https://qrco.de/minfec>.